

**SkyAir**

**SKYAIR  
COMPACT  
CASSETTE**  
(FULLY FLAT)





# COMPACT CASSETTE

## DESIGN AND GENIUS IN ONE

---

Daikin's Compact Cassette is a powerful, efficient and discreet solution for commercial, retail and residential applications where both aesthetics and performance are paramount.

The Compact Cassette combines the latest technology with innovative functions for high operating efficiency and user comfort, all within a unique design that allows the visible panel to fit flush within standard architectural ceiling panels.

## TOP EFFICIENCY YEAR-ROUND

Daikin's Compact Cassette delivers exceptional performance and efficiency throughout the entire year. An optional presence sensor also helps deliver even greater operating efficiency.

### AIR QUALITY

The quality of the air in the room is as important as the temperature and we have fitted advanced filters to help remove dust particles to ensure the air is clean.

### QUIET COMFORT

The Compact Cassette is one of the quietest units in the light commercial market and, in addition to the sensors, has various functions that are designed to enhance user comfort.

# FULLY INTEGRATED, FULLY DISCREET

The Compact Cassette is a unique iconic design with a discreet white finish and decoration panel. The cassette blends in, resulting in a fully discreet unit.

## FULLY FLAT WITH THE CEILING

Daikin's Compact Cassette is the first cassette that fits fully flat with the ceiling, making the unit blend discreetly in the ceiling.



## FITS CEILING TILES PERFECTLY

The newly designed panel integrates fully within one ceiling tile enabling lights, speakers and sprinklers to be installed in the adjoining ceiling tiles.



# DIFFERENTIATED BY EXCELLENCE

To ensure perfect interior comfort the Daikin Compact Cassette can be fitted with an optional sensor\* linked to an advanced controller.



When there is nobody in the room, the presence sensor\* adjusts the set point or switches off the unit, avoiding unnecessary cooling or heating. When motion is detected the temperature is reset to its original setpoint ensuring perfect, energy efficient operation.

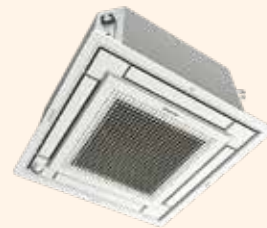


The presence sensor\* also helps direct airflow away from you for draught free comfort. While the floor sensor\* monitors temperature difference between the floor and ceiling to maintain even temperature and prevent temperature stratification in the space.

\*Additional sensor kit BRYQ60AAW required to enable this feature (floor and presence sensors included)

# SKYAIR

## COMPACT CASSETTE (FULLY FLAT)



| Indoor Unit                                 |                   | FFA25AVM                       | FFA35AVM        | FFA50AVM        | FFA60AVM        | FFA71AVM        |
|---|-------------------|--------------------------------|-----------------|-----------------|-----------------|-----------------|
| Outdoor Unit                                |                   | RZAC25EVM                      | RZAC35EVM       | RZAC50EVM       | RZAC60EVM       | RZAC71EVM       |
| Rated Capacity (Min. - Max.)                | Cool (kW)         | 2.5 (1.2-3.0)                  | 3.5 (1.3-4.0)   | 5.0 (1.5-6.0)   | 6.0 (1.5-7.0)   | 7.1 (1.5-7.6)   |
|   | Heat (kW)         | 3.2 (1.0-3.7)                  | 4.2 (1.0-4.3)   | 6.0 (1.4-7.0)   | 7.1 (1.4-8.0)   | 8.0 (1.4-8.4)   |
| Indoor Airflow Rate (H/M/L)                 | (l/s)             | 150 / 133 / 108                | 167 / 142 / 108 | 200 / 167 / 125 | 250 / 208 / 158 | 258 / 208 / 158 |
| Indoor Fan Speeds                           |                   | 3 steps                        |                 |                 |                 |                 |
| Fascia Panel                                | Model / Colour    | BYFQ60CAW / White              |                 |                 |                 |                 |
|   | Dimension (HxWxD) | 46x620x620                     |                 |                 |                 |                 |
|   | Weight (kg)       | 2.8                            |                 |                 |                 |                 |
| Power Supply                                |                   | 1 Phase, 220-240V, 50Hz        |                 |                 |                 |                 |
| Power Input (Rated)                         | Cool/Heat (kW)    | 0.54 / 0.75                    | 0.88 / 1.09     | 1.11 / 1.55     | 1.50 / 1.90     | 2.00 / 2.25     |
| E.E.R / C.O.P                               | Cool/Heat         | 4.63 / 4.27                    | 3.98 / 3.85     | 4.50 / 3.87     | 4.00 / 3.74     | 3.55 / 3.56     |
| AEER / ACOP                                 | Cool/Heat         | 4.47 / 4.16                    | 3.89 / 3.79     | 4.43 / 3.82     | 3.95 / 3.70     | 3.52 / 3.53     |
| TCSPF (Cooling)<br>Commercial / Residential | Hot               | 6.08 / 5.61                    | 5.71 / 5.27     | 6.19 / 5.77     | 5.91 / 5.49     | 5.35 / 4.97     |
|   | Average           | 5.92 / 4.78                    | 5.70 / 4.67     | 6.19 / 5.21     | 6.00 / 5.02     | 5.46 / 4.60     |
|   | Cold              | 6.18 / 4.72                    | 6.04 / 4.73     | 6.54 / 5.29     | 6.40 / 5.18     | 5.85 / 4.78     |
| HSPF (Heating)<br>Commercial / Residential  | Hot               | 4.75 / 4.75                    | 4.65 / 4.64     | 4.87 / 4.87     | 4.72 / 4.71     | 4.53 / 4.52     |
|   | Average           | 4.52 / 4.39                    | 4.33 / 4.13     | 4.56 / 4.34     | 4.41 / 4.19     | 4.23 / 4.02     |
|   | Cold              | 4.14 / 3.93                    | 3.87 / 3.58     | 4.12 / 3.84     | 3.98 / 3.70     | 3.84 / 3.58     |
| Dimensions (HxWxD)                          | Indoor (mm)       | 260x575x575 (+63)*             |                 |                 |                 |                 |
|   | Outdoor (mm)      | 550x675x284                    |                 | 695x930x350     |                 |                 |
| Weight                                      | Indoor (kg)       | 16                             |                 | 17.5            |                 |                 |
|   | Outdoor (kg)      | 28                             |                 | 54              |                 |                 |
| Compressor Type                             |                   | Hermetically Sealed Swing Type |                 |                 |                 |                 |
| Refrigerant Type                            |                   | R32                            |                 |                 |                 |                 |
| Max Pipe Length                             | (m)               | 20                             |                 | 30              |                 |                 |
| Max Level Difference                        | (m)               | 15                             |                 | 20              |                 |                 |
| Pipe Sizes                                  | Liquid (mm)       | ø 6.4                          |                 |                 |                 |                 |
|   | Gas (mm)          | ø 9.5                          |                 | ø 12.7          |                 |                 |
|   | Drain             | VP20 (OD ø 26 / ID ø 20)       |                 |                 |                 |                 |
| Outdoor Operating Range                     | Cool (°CDB)       | -10 to 46                      |                 |                 |                 |                 |
|   | Heat (°CWB)       | -15 to 18                      |                 |                 |                 |                 |
| Indoor Sound Pressure Level (H/M/L)         | dBA               | 31 / 28.5 / 25                 | 34 / 30.5 / 25  | 39 / 34 / 27    | 44 / 40 / 32    | 44.5 / 40 / 32  |
| Outdoor Sound Pressure Level                | Cool/Heat (dBA)   | 46 / 47                        | 48 / 48         | 48 / 48         | 49 / 52         | 53 / 55         |
| Outdoor EPA Sound Power Level (H)           | dBA               | 59                             | 61              | 62              | 64              | 67              |

\*Dimension including electrical box

Note:

- Specifications are based on the following conditions:  
Cooling: Indoor temp: 27°CDB, 19°CWB, Outdoor temp: 35°CDB. Equivalent piping length: 5.0m, Level difference: 0m  
Heating: Indoor temp: 20°CDB, Outdoor temp: 7°CDB, 6°CWB, Equivalent piping length: 5.0m, Level difference: 0m
- Sound level: Anechoic chamber conversion value, measured according to JIS parameters and criteria.  
During operation these values may differ due to ambient conditions
- TCSPF: Total Cooling Seasonal Performance Factor & HSPF: Heating Seasonal Performance Factor as defined under the Energy Efficiency (Energy Using Products) Amendment Regulations 2020.

Your Local Daikin Specialist Dealer:



Daikin Air Conditioning  
New Zealand Limited  
(ISO 9001)  
QMS42380  
Auckland



For all sales enquiries email:  
[sales@daikin.co.nz](mailto:sales@daikin.co.nz)

For customer service or technical support:  
**0800 209 010**

[daikin.co.nz](http://daikin.co.nz)